

CREATIVE PORTFOLIO

AUGUST 2025

ABED AL RAHMAN ALI
GRAPHIC DESIGNER - WEBSITE MANAGER - DIGITAL MARKETER

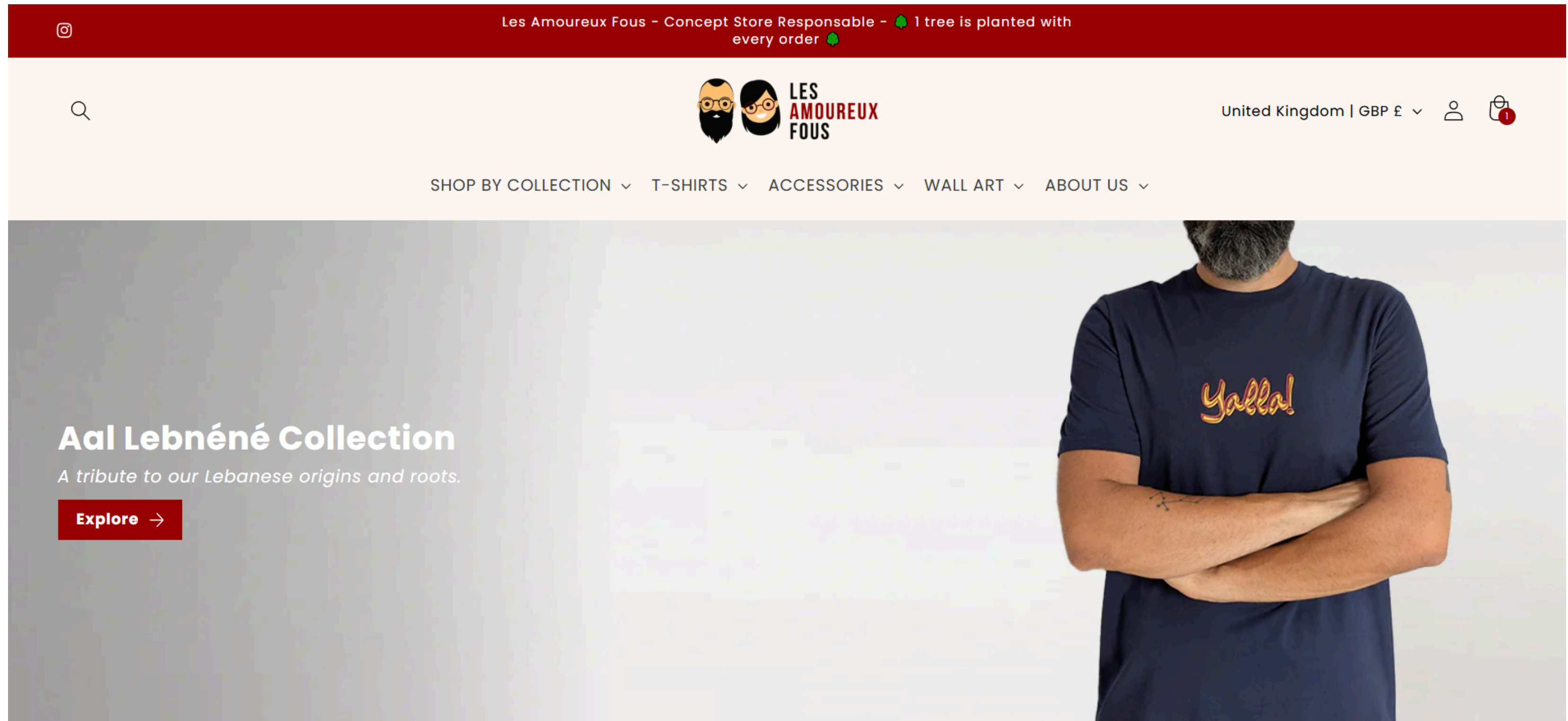


Hi, I'm Abed Al Rahman Ali! I'm a graphic designer, website manager, and digital marketer who loves turning ideas into visuals and online experiences that connect with people. I enjoy blending creativity with strategy to make projects look great and work even better.

Let's build something extraordinary together.

About Me

E-COMMERCE WEBSITES - [HTTPS://LAFPARIS.COM/](https://lafparis.com/)



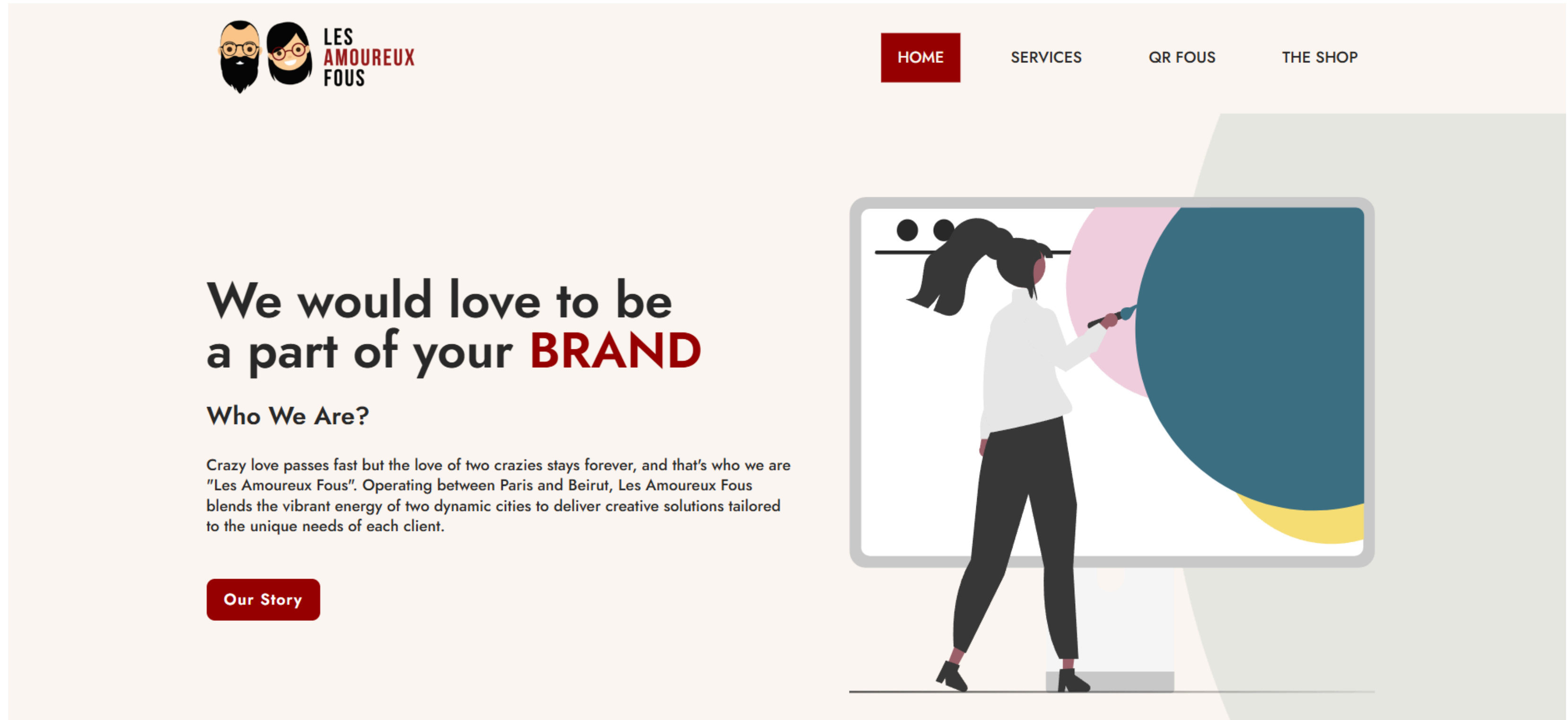
E-COMMERCE WEBSITES - [HTTPS://WWW.BRITISHWHOLESALERLB.COM/](https://www.britishwholesalerlb.com/)



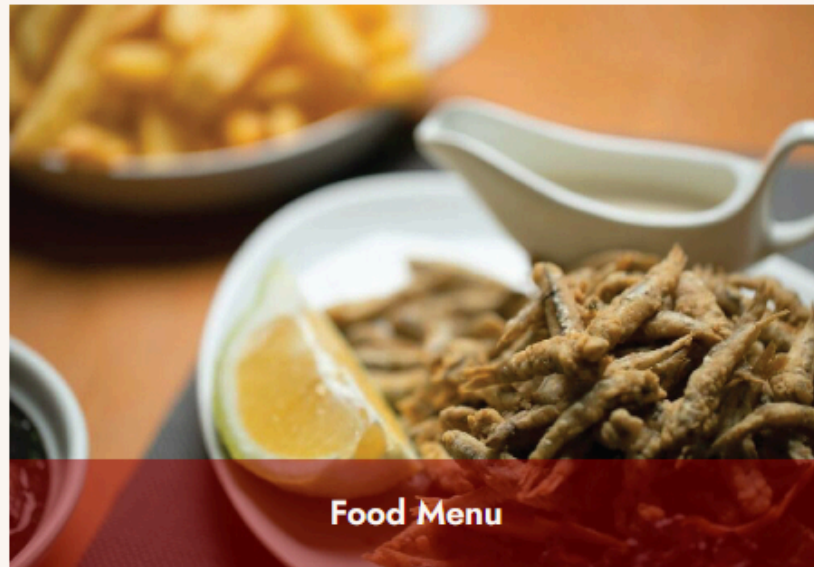
- New Arrivals
- All Products
- Health & Beauty ▾
- Household ▾
- Toys ▾
- Food & Drinks ▾
- Tobacco
- Sale ▾



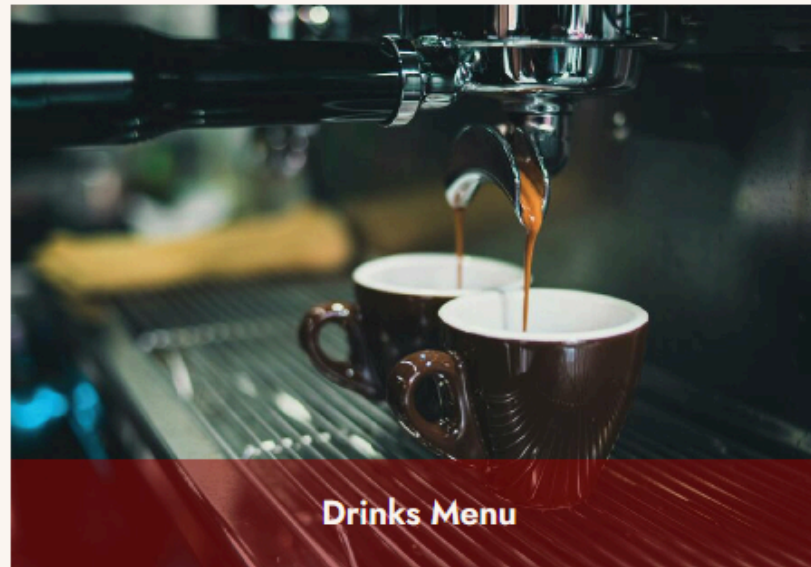
WEBSITES - [HTTPS://WWW.LESAMOUREUXFOUS.COM/](https://www.lesamoureuxfous.com/)



WEBSITES - ONLINE MENU



Food Menu

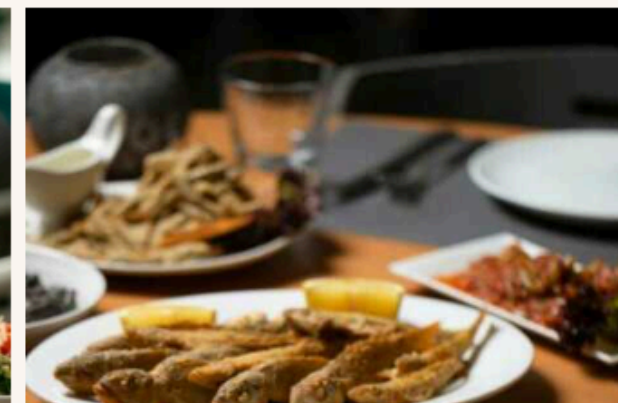
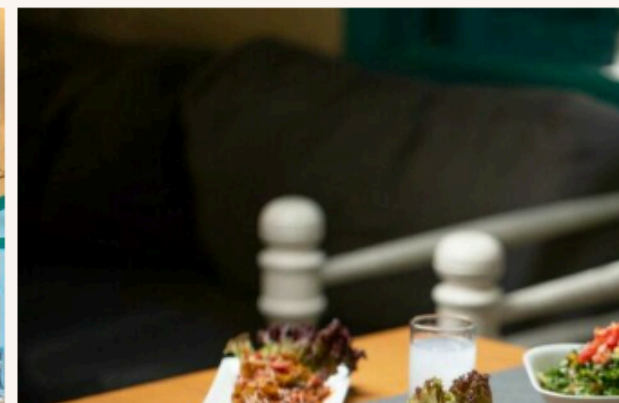
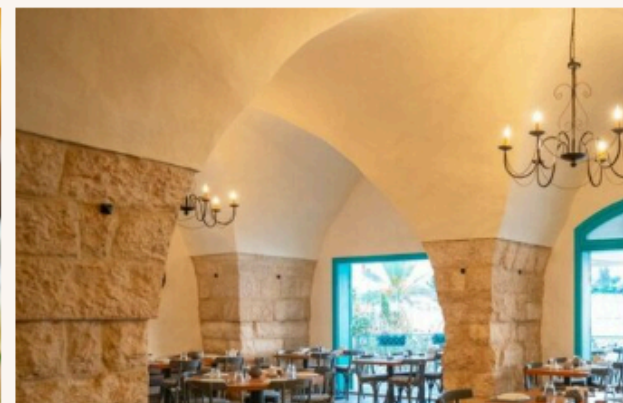


Drinks Menu



Wine Menu

For Reservation: 09855972 - 70662111



CREATIVE PORTFOLIO

LAF PARIS DRAWING AND DESIGN

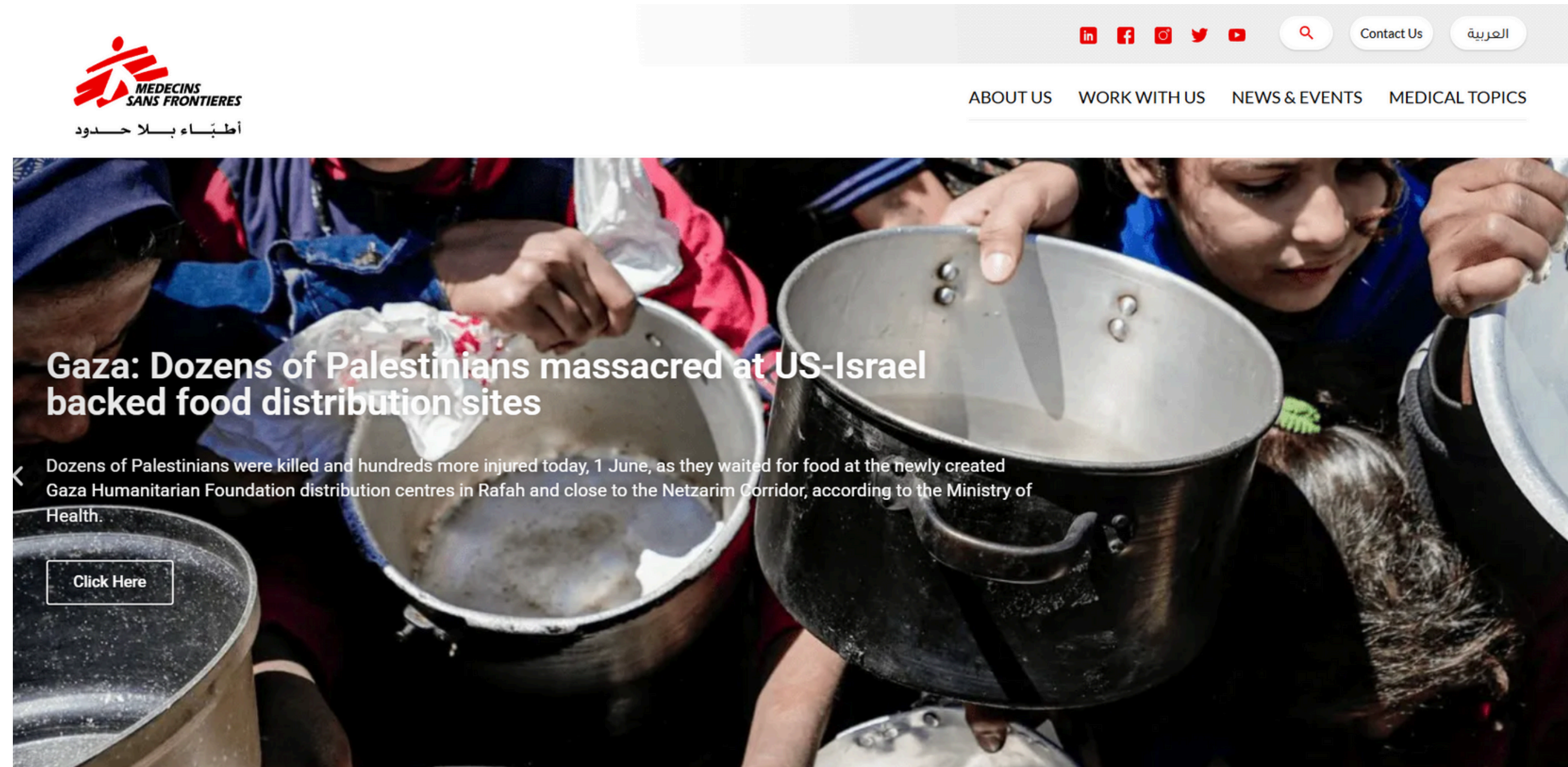
ABED AL RAHMAN ALI



CREATIVE PORTFOLIO

MSF LEBANON WEBSITE MANAGEMENT

ABED AL RAHMAN ALI

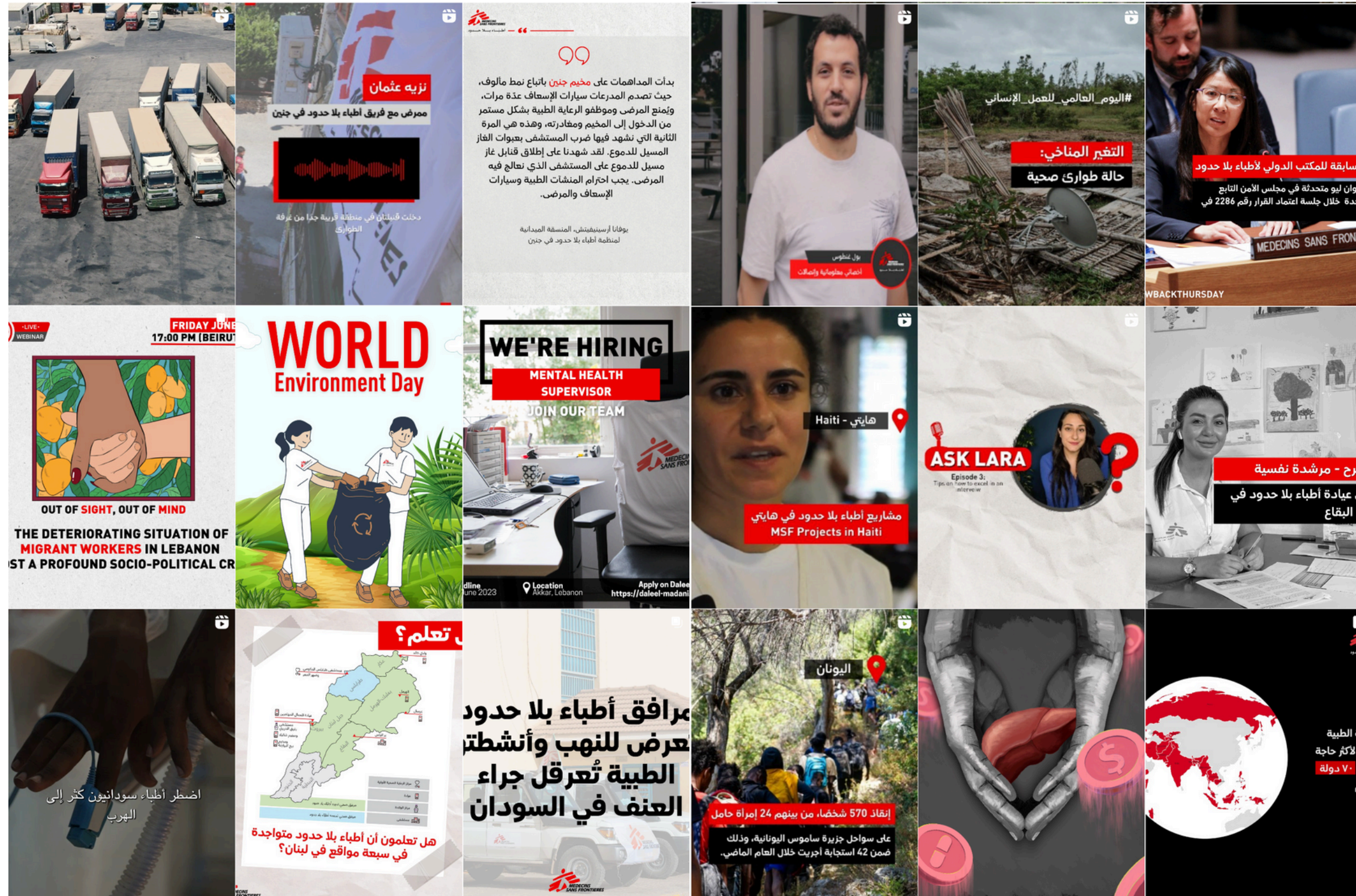


PROJECT SCOPE:

- COORDINATE WITH THE DEVELOPMENT AGENCY
- UPDATE AND MAINTAIN WEBSITE CONTENT
- CREATE VISUALS AND GRAPHIC ASSETS
- DESIGN AND LAUNCH NEW WEB PAGES
- MONITOR WEBSITE PERFORMANCE AND FUNCTIONALITY
- GENERATE REPORTS AND ANALYZE WEBSITE ANALYTICS

[CHECK THE WEBSITE](#)

MSF LEBANON
MSF LEBANON SOCIAL MEDIA PAGES



PROJECT SCOPE:

- CREATE VISUALS AND GRAPHIC ASSETS FOR SOCIAL MEDIA
- MANAGE AND MAINTAIN PLATFORMS (FACEBOOK, INSTAGRAM, X, YOUTUBE, LINKEDIN)
- PRODUCE AND EDIT REELS AND SHORT-FORM VIDEO CONTENT
- PERFORM VIDEO EDITING FOR CAMPAIGNS AND POSTS
- MONITOR SOCIAL MEDIA PERFORMANCE AND TRENDS
- HANDLE COMMUNITY MANAGEMENT (ENGAGEMENT, COMMENTS, MESSAGES)
- PLAN AND SCHEDULE CONTENT CALENDARS
- TRACK ANALYTICS AND PREPARE PERFORMANCE REPORTS
- COLLABORATE ON CAMPAIGNS WITH MARKETING AND DESIGN TEAMS
- ENSURE CONSISTENT BRANDING AND MESSAGING ACROSS ALL PLATFORMS
- CRISIS MANAGEMENT - HANDLE AND REPORT NEGATIVE FEEDBACK OR PR ISSUES

CREATIVE PORTFOLIO

MSF LEBANON GRAPHIC DESIGN - BROCHURES & REPORTS

ABED AL RAHMAN ALI

Annual Report Yemen 2022

TABLE OF CONTENT

- About MSF 2
- MSF Activities in Yemen in 2022 3
- MSF Charter 3
- MSF Principles 4
- Data and Figures 2022 5
- The Year in Review: MSF Regular Projects 6
- Aden Governorate 7
- Al-Hudaydah Governorate 8
- Amran Governorate 10
- Hajjah Governorate 11
- Ibb Governorate 13
- Mayle Governorate 14
- Sa'ada Governorate 14
- Shabwa Governorate 16
- Taiz Governorate 17
- MSF Support And Donations In Other Governorates 19
- Abyan Governorate 20
- Al-Bayda Governorate 20
- Al-Jawf Governorate 20
- Lahj Governorate 20
- Sana'a Governorate 21
- Shabwa Governorate 21
- Challenges and Constraints 22

ABOUT MSF

Médecins Sans Frontières/Doctors Without Borders (MSF) is an international, independent, non-profit medical humanitarian organisation that delivers emergency aid to people affected by armed conflict, epidemics, pandemics, natural disasters and exclusion from healthcare. Since 1971, we have provided assistance to people based on need and irrespective of their race, religion, gender or political affiliation.

Our actions are guided by medical ethics and the principles of impartiality, independence and neutrality. We do not take sides and seek to bring assistance to those who need it most urgently. In situations of conflict, we do not accept funds from governments or other parties who are directly involved.

MSF constantly seeks to improve the quality, relevance and scope of its assistance. We are dedicated to the pursuit of innovation.

When witnessing serious acts of violence, neglected crises or obstructions to its activities, MSF may speak out about what it has seen.

MSF operates in more than 70 countries worldwide. Our teams are made up of tens of thousands of health professionals, logistical and administrative staff, the vast majority of whom come from the countries where we provide medical assistance.

MSF was awarded the Nobel Peace Prize in 1999.

MSF ACTIVITIES IN YEMEN IN 2022

MSF has been working in Yemen since 1986 and its teams have worked in the country continuously since 2007. In 2022, MSF teams worked in 14 hospitals and provided support to another 12 health facilities across 14 governorates (Abyan, Aden, Al-Hudaydah, Amran, Hajjah, Ibb, Lahj, Marib, Sa'ada, Sana'a, Shabwah, Al-Baydah, Al-Jawf and Taiz).

MSF PRINCIPLES

Patients First
MSF's actions are first and foremost medical. The notion of quality care for the individual patient is central to our humanitarian objective. We seek to provide high-quality care and to act always in the best interest of our patients, to respect their confidentiality, their right to make their own decisions and, above all, to do them no harm. When medical assistance alone is not enough, we may provide shelter, water and sanitation, food or other services.

Medical Ethics
We carry out our work with respect for the rules of medical ethics, in particular the duty to provide care without causing harm to individuals or groups. We respect patients' autonomy, patient confidentiality and their right to informed consent. We treat our patients with dignity and with respect for their cultural and religious beliefs. In accordance with these principles, MSF endeavours to provide high-quality medical care to all patients.

Independence
Our decision to offer assistance in any country or crisis is based on an independent assessment of people's needs. We strive to ensure that we have the power to freely evaluate medical needs, to access populations without restriction and to directly control the aid we provide. Our independence is facilitated by our policy to allow only a marginal portion of our funds to come from governments and intergovernmental organizations.

Impartiality and Neutrality
MSF offers assistance to people based on need and irrespective of race, religion, gender or political affiliation. We give priority to those in the most serious and immediate danger. Our decisions are not based on political, economic or religious interests. MSF does not take sides or intervene according to the demands of governments or warring parties.

Bearing Witness
The principles of impartiality and neutrality are not synonymous with silence. When MSF witnesses extreme acts of violence against individuals or groups, we may speak out publicly. We may seek to bring attention to extreme need and unacceptable suffering when access to lifesaving medical care is hindered when medical facilities come under threat, when crises are neglected, or when the provision of aid is inadequate or abused.

Accountability
MSF is committed to regularly evaluating the effects of its activities. We assume the responsibility of accounting for our actions to our patients and donors.

DATA AND FIGURES 2022

MSF Medical Data:

- Patients Treated For War And Violence-related Injuries: 11,523
- Patients Received in Emergency Rooms: 253,714
- Surgical Interventions Performed: 38,422
- Children Admitted To Paediatric Wards: 15,410
- Antenatal And Postnatal Care Consultations: 50,115
- Deliveries Assisted: 34,472
- Newborns Admitted: 7,885
- Patients Treated For Malnutrition: 9,829
- Outpatient Department Consultations: 159,369
- Mobile Clinic Consultations: 19,864
- Patients Treated For Malaria: 1,199
- Patients Treated For Dengue Fever: 1,531
- Patients Treated For Measles: 1,837
- Patients Treated For Suspected Diphtheria: 112
- Referrals To Other Health Facilities: 33,719

MSF Logistics Data:

- 713,643 tons of medical supplies sent to Yemen

Human Resources:

- Number of MSF staff, both international and locally hired: 3,885
- Number of MSF volunteers: 347
- Number of Ministry of Health staff receiving incentive pay from MSF: 1,124

Budget:

- €105,844,821.18

ADEN GOVERNORATE

MSF has been continuously working in south Yemen since 2011. In 2012, MSF opened an independent hospital specialising in emergency traumatology and surgery within Al-Sadaqah hospital complex in Aden, with an emergency room, an inpatient ward, an intensive care unit, three operating theatres, isolation rooms, an outpatient department and a unique microbiology laboratory to identify antimicrobial resistance. MSF teams also provide health education and physiotherapy. All services at the hospital are free of charge.

In 2022, MSF staff in Aden continued to receive war-wounded patients from various frontlines, through a referral system supported by MSF. Staff also received patients with accidental injuries (mainly road traffic accidents) referred from outside Aden city. In 2022, the hospital expanded its activities to provide reconstructive interventions such as internal fixation for bone fractures.

MSF also carried out staff training and donated medical supplies and drugs to medical facilities, and supported Bahan hospital in Shabwah governorate, Karah Advance Medical Centre in Lahj governorate, and Ladder hospital in Abyan governorate. MSF also provided regular donations of medical kits and blood bags to the blood bank in Aden.

Health Promotion Activities:

With less than 1% of the population vaccinated against COVID-19, in 2022 MSF continued to work to stop the spread of the virus and to mitigate its impact. This involved two main areas:

- Supporting regular health facilities with COVID-19 preparedness. MSF staff provided technical support to emergency room staff on triage, testing, infection prevention control and help in reorganising patient flow.
- Promoting COVID-19 vaccinations among the most exposed and/or vulnerable groups, such as health workers and internally displaced people.

MSF's health promotion team covered 34 sites for internally displaced people and six health facilities across seven districts of Aden governorate. From September to December 2022, the team conducted 567 health promotion sessions for 4,511 people. The health promotion concluded its activities in December 2022.

Key Challenges:

In MSF's trauma hospital in Aden, one of the main challenges for the team is antimicrobial resistance. The use of antibiotics in Yemen is random, allowing antimicrobial-resistant bacteria to multiply and develop immunity against existing antibiotics. Patients may have to stay in the isolation ward for weeks or months with comprehensive follow-up until their recovery. The security situation in Aden also presents challenges for the hospital staff.

In 2022, in MSF's trauma hospital in Aden:

- Emergency Room Consultations: 8,127
- Inpatient Admissions: 2,331
- Surgical Procedures: 1,291
- Outpatient Consultations: 7,129
- Physiotherapy Sessions: 14,631

AL-HUDAYDAH GOVERNORATE

MSF teams have worked in Ad-Dahi hospitals since 2019 alongside Ministry of Health staff.

In both facilities, MSF and Ministry of Health teams co-manage the emergency room, inpatient department and high dependency units. In Al-Salahana hospital, MSF's focus is on surgical cases; in Ad-Dahi hospital, the focus is on paediatric and neonatal care. In both locations, MSF teams routinely respond to neglected tropical diseases such as malaria and dengue fever. MSF also responded to a measles outbreak at Al-Tawera hospital, providing medical supplies, incentive pay and training for the Ministry of Health staff working in the isolation unit and supervising the quality of care.

In 2022, MSF teams extended the emergency room in Al-Salahana hospital and boosted its bed capacity. They also renovated the hospital laundry to ensure high standards of infection prevention and control, before handing over its medical activities in Al-Salahana hospital to local health authorities in September 2022.

From August 2022, MSF teams in Ad-Dahi witnessed an influx of children with acute watery diarrhoea. MSF deployed more staff and set up a 30-bed diarrhoea treatment centre at a local community charity centre. Most children admitted to the diarrhoea treatment centre were malnourished. The number of cases of acute malnutrition among children under five years in Al-Hudaydah was higher in 2022 than in previous years. In response, an MSF team in Ad-Dahi hospital treated children with severe acute malnutrition with complications, stabilised them and referred them to a specialist therapeutic feeding centre run by MSF to continue the treatment. MSF's 15-bed inpatient therapeutic feeding centre (ITFC) began receiving patients in November 2022, while MSF also set up two outpatient therapeutic feeding centres (ATFCs) nearby.

In 2022, MSF teams in Al-Hudaydah also focused on implementing a paediatric emergency referral system in the districts surrounding Ad-Dahi in order to reduce morbidity and mortality among children through timely access to free quality emergency healthcare. MSF also started to support Al-Kadim primary health centre with incentives for health workers and supplies of medications.

Emergency Room Consultations in Ad-Dahi Hospital (2022): 23,148

- Emergency Room Consultations in Al-Salahana Hospital (January to September 2022): 13,219
- Surgical Intervention in Al-Salahana Hospital (January to September 2022): 1,213
- Children Admitted to MSF Diarrhoea Treatment Centre in Ad-Dahi (August to October 2022): 2,488
- Children Admitted to MSF Outpatient Therapeutic Feeding Centre in Ad-Dahi: 405
- Children Enrolled in MSF Outpatient Therapeutic Feeding Programme in Ad-Dahi: 384

In 2020, MSF built a new operating theatre in Al-Qanawis mother and child hospital. From December 2020, MSF supported the hospital in collaboration with the Ministry of Health, providing maternity and neonatal services including emergency caesareans, inpatient neonatal care and psychosocial support. MSF also provided trainings, incentive pay to Ministry of Health staff and supported the laboratory, blood bank, pharmacy and logistics activities at the hospital.

MSF also put in place a referral system from Al-Qanawis hospital to various tertiary-level hospitals in Hajjah and Al-Hudaydah governorates for patients requiring further medical care.

AMRAN GOVERNORATE

In 2022, MSF responded to the conflict and the gap in health services for women and children in Amran governorate.

MSF has worked with health authorities in Al-Salam hospital in Khamer for more than 10 years. In 2022, MSF supported ancillary services including the laboratory, the blood bank and the X-Ray unit, and managed the laundry, the sterilisation unit, the kitchen, the electricity supply and waste management facilities for the whole hospital. MSF also paid incentives to all Ministry of Health staff working in the departments managed by MSF in Al-Salam hospital.

Between May and late November 2022, MSF saw a significant increase in the number of children admitted to the inpatient therapeutic feeding centre, paediatric inpatient department and neonatal unit. MSF set up an additional 100 beds to cope with demand.

In 2022, significant numbers of children with severe acute malnutrition and medical complications (severe diarrhoea, dehydration, shock) arrived at the hospital's emergency room. In August, high numbers of children with measles and medical complications were admitted to the isolation ward. Only a few of these patients had previously been vaccinated against measles.

Beyond the hospital, MSF supported a network of traditional birth attendants in Amran governorate who referred patients to Al-Salam hospital. The hospital also received referrals for obstetric emergencies from health units in the north of the governorate, such as Osman Valley in Khamer district and Kathak, Al-Jahlah, Jabal Gawas and Al-Zawager in Habur Zulfaimah district. In June 2022, MSF also organised training sessions in maternal healthcare for 32 traditional birth attendants.

In 2022, MSF made regular visits to primary health centres in districts surrounding Khamer (Khamer district, Habour district and Bani Suraimi) to improve its understanding of healthcare access.

Starting in August, MSF's mobile training team provided seven training sessions to 168 healthcare workers on infection prevention and control, paediatric care (malnutrition, measles management, neonatal care) and maternal care (antenatal and postnatal care).

In December 2022, MSF organised training sessions for medical staff at Habour rural hospital and in June and July 2022 organised training sessions for staff at other health centres in the district on maternal care, paediatric care, patient assessment, and referral criteria to either Habour hospital from local health centres, or to Khamer hospital for critical cases arriving at Habour hospital.

MSF teams were often confronted with patients presenting at a very late stage, with severe medical and nutritional complications which sometimes needed treatment that was beyond the capacity of the hospital supported by MSF.

HAJJAH GOVERNORATE

MSF has been supporting since 2015 in collaboration with the Ministry of Health. In 2022, MSF supports in running the emergency room, operating theatre, surgical ward, paediatric ward, neonatal unit, inpatient therapeutic feeding centre, maternity department and isolation unit. In these departments, MSF also provided medical healthcare to patients and provided incentive pay to Ministry of Health staff. MSF also ran the laboratory, blood bank, pharmacy and logistics activities in the hospital, and supported a referral system for patients requiring further medical care from Abs general hospital to various hospitals in Sana'a, Hajjah city and Al-Hudaydah city.

MSF also managed a team of community health workers who travelled to areas with high numbers of internally displaced people and surrounding host communities in Abs district and parts of Al-Hudaydah governorate to identify and refer critical patients to Abs general hospital as well as to monitor disease outbreaks at community level.

In 2022, MSF increased bed capacity in the neonatal unit to 88, while also increasing bed capacity in the delivery section of the maternity unit from three to six beds.

MSF also installed an industrial laundry machine and drainage system in the hospital, paved and reinforced the whole external ground of the hospital and installed a new 400 kVA generator to power the hospital, including providing a power supply to the oxygen plant.

Between June and December 2022, MSF provided temporary support to the opening of the Ministry of Health's new outpatient department and operating theatre for elective surgeries. MSF's support consisted of implementing repairs, donating supplies and providing financial incentives to Ministry of Health staff.

In Hajjah city, MSF continued to support Al-Jumhuri authority hospital by running a specialist mental health clinic, set up in May 2021, with a multidisciplinary team providing people affected by the conflict with psychoeducation, counselling, psychotherapy and psychiatric care for those with severe mental health conditions. MSF also set up a day care centre with support groups for patients with chronic severe mental disorders and their caregivers, to help reintegrate these patients into normal activities. The day care centre registered positive results for all cohorts in the programme. The team in Hajjah also continued to provide medical referrals from Abs general hospital to Al-Jumhuri authority hospital in Hajjah city for patients requiring specialist care.

Key Challenges:

People's limited access to primary healthcare and the limited availability of quality health services were a major challenge for teams at Abs hospital, increasing the severity of cases arriving at the hospital and overloading hospital departments. Increased support to the primary healthcare system is urgently needed to relieve pressure on the hospital. In addition, the prolonged malnutrition peak season meant that more beds were needed in the inpatient therapeutic feeding centre. Similarly, the high number of patients led to an increase of admissions to the paediatric and neonate wards.

In 2022:

- Patients Seen in the Emergency Room of Abs General Hospital: 77,325
- Births Assisted at Abs General Hospital: 18,191
- Patients Admitted to Paediatric Ward, Inpatient Therapeutic Feeding Centre, Neonatal Unit and Surgical Ward at Abs General Hospital: 11,647
- Psychological Consultations at Al-Jumhuri Authority Hospital: 4,411
- Group Activities at Al-Jumhuri Authority Hospital: 677
- Psychiatric Consultations at Al-Jumhuri Authority Hospital: 2,083

MSF LEBANON

GRAPHIC DESIGN - PRESENTATIONS

MEDECINS SANS FRONTIERES
أطباء بلا حدود

SORT-IT May 2022

1 **SORT-IT**
May 2022

2 **Campaign Objective**

- Show MSF as a contributor to the development of medical research through the SORT-IT and other platforms.
- Profile the experience and diversity of the participants (MSF Staff) and the MSF projects they come from.
- Position the SORT-IT as a learning tool on MSF Lebanon social media channels and Arabic speaking media outlets.

3 **Introductory Video**

Welcome To SORT-IT

4 **Introductory Digital Leaflet**

5 **Social Media Posts** Meet the Participants

6 **Social Media Posts** Research Topics

SORT-IT 2022

Research on Antimicrobial Resistance

1 **MSF Lebanon Branch Office**
March 2022

2 **Challenge**

1. MSF Lebanon - Branch Office
2. 2019-2023 Strategic Pillars
3. Meet the Team
4. Challenges

3 **MSF Lebanon - Branch Office**

1. MSF Lebanon - Branch Office
2. MSF SORT-IT Participants
3. Meet the Team
4. Challenges

4 **MSF & The MENA**

The scope of MSF presence in the Middle East region has risen over the past years. As the region has destabilized, MSF has increased the volume of its operations & invested in Beirut & Amman institutional resources, after the presence of the Beirut more than 23 years ago.

5 **MSF & Lebanon**

MSF has responded to a "call to Lebanon"

MSF has been continuously present in Lebanon

1974

1982-2004

2008

2014

In and out of the country during almost every major crisis

Interventional activities started in Beirut identifying three priorities:

1. Recruitment
2. Stability
3. Staff Support

6 **MSF & Lebanon**

Beirut Comm. hub created in Beirut & Cam

USA approved MSF Lebanon in Beirout

2014

2017

2018

2019

Recruitment activities were intensified - The Hub reported to become a branch office

MSF Lebanon is working on getting registered under ID

7 **MSF & Lebanon**

MSF LEVEL OF TRUST

Team Meeting

CREATIVE PORTFOLIO

MSF LEBANON GRAPHIC DESIGN SOCIAL MEDIA POSTS



Let's Meet The Team

Hello, I'm Reem el Cheikh

Medicines Dispenser
Primary Health Clinic in Wadi Khaled

WWW.MSF-LEBANON.ORG



هل تعلم؟



هل تعلمون أن أطباء بلا حدود قد وفرت الرعاية الطبية في منطقة حرب لأول مرة عام 1976 في لبنان بعد اندلاع الحرب الأهلية في البلاد؟

WWW.MSF-LEBANON.ORG



أتوق إلى حلول السلام. إذا تمكنا من أن نعيش بسلام من جديد في ميانمار، فإننا سنعود إلى البلد. ولم لا نعود إذا ما تحققت العدالة ومُنحنا حق المواطنة؟ أليس ذاك البلد وطننا أيضًا؟ ولكن كيف لنا أن نعود وأبسط حقوقنا غير مضمونة؟

طبية بيقوم - هربت من ميانمار في عام 2017 مع أطفالها

WWW.MSF-LEBANON.ORG

ABED AL RAHMAN ALI

المواطنة

- **تستشير** الطبيب في أقرب فرصة ممكنة وتنصح أفراد عائلتها وأقرباءها بذلك.
- **لا تشارك** المضادات الحيوية مع أحد ولا تلجأ إلى العلاج الذاتي.
- تتناول الجرعة الكاملة من المضادات الحيوية التي يصفها الطبيب حتى لو شعرت بتحسن قبل الانتهاء منه.
- **تطبق** ممارسات نظافة صحية آمنة لتجنب نشر البكتيريا المقاومة.
- **تتلقى** اللقاحات الروتينية اللازمة حسب الحاجة.



WWW.MSF-LEBANON.ORG



الكوليرا هي عدوى معوية حادة تنشأ بسبب تناول طعام أو ماء ملوثان ببكتيريا الضمة الكوليرية.



تسبب **الكوليرا** إسهال مائي حاد غزير (براز شبيه بماء الرز) غالبًا دون حرارة، وقد يؤدي إلى التجفاف.

WWW.MSF-LEBANON.ORG

CREATIVE PORTFOLIO

MSF LEBANON GRAPHIC DESIGN SOCIAL MEDIA POSTS

MSF SPOTLIGHT SERIES "Climate Crisis" An Existential Emergency

Thursday May 5 at 15:00 (Beirut Time)
ON ZOOM APPLICATION
THIS SESSION WILL BE HELD IN ENGLISH

Speakers

- DR. NADIM FARAJALLA**
Director of the "Climate Change and Environment" Program at the Issam Fares Institute for Public Policy and International Affairs in the American University of Beirut
- MR. ADNAN MELKI**
National Coordinator at The Global Environment Facility (GEF), UNDP
- MS. CAROLINE VOUTE**
Health Policy/Climate and Environmental Health Advisor, MSF

Moderator

- MS. CAROL DEVINE**
Lead, Humanitarian Action on Climate & Environment (HACE), MSF Canada

أطباء بلا حدود
50 عاماً من الإنسانية
عرض فيلم



عرض فيلم من إنتاج شركة Aftermedia وأطباء بلا حدود بعنوان **SELFISH (ÉGOÏSTE)**

يعرض هذا الفيلم كيف تحدث أربعون عاملاً في المجال الإنساني وذويهم عن تجاربهم الشخصية في العمل الإنساني. فتحدثوا من دون تحفظ عن المخاطر، والالتزام، والبعثة الأولى، والشعور بالعجز، واللقاءات، والشغف والعودة إلى الوطن، كما أخبرونا عما شهدوه من أمور تفوق الوصف.

مدة الفيلم: 56 دقيقة

الخميس 2 ديسمبر/ كانون الأول
عند الساعة السابعة مساءً
في ملتقى برزخ الثقافي، الحمرا بيروت

امسح رمز QR للتسجيل

المصورة تتكلم من "البحر المتوسط"



أطباء بلا حدود

ABED AL RAHMAN ALI

في مثل هذا اليوم
مذبحة سربر نيتشا
11 يوليو



أطباء بلا حدود
50 عاماً من الإنسانية

MSF'S RESPONSE TO LEBANON'S CHOLERA OUTBREAK

Tripoli

- CHOLERA TREATMENT CENTER
- HEALTH AWARENESS ON CHOLERA
- HYGIENE KITS DISTRIBUTION
- VACCINATION
- TRAININGS TO HEALTHCARE WORKERS
- DONATIONS

South Beirut
Beirut
Nabatieh

112 Patients Treated
80,000 People Vaccinated
10,000 Hygiene Kits Distributed
442 Healthcare Workers Trained

أطباء بلا حدود

CREATIVE PORTFOLIO

MSF LEBANON
VIDEO EDITING

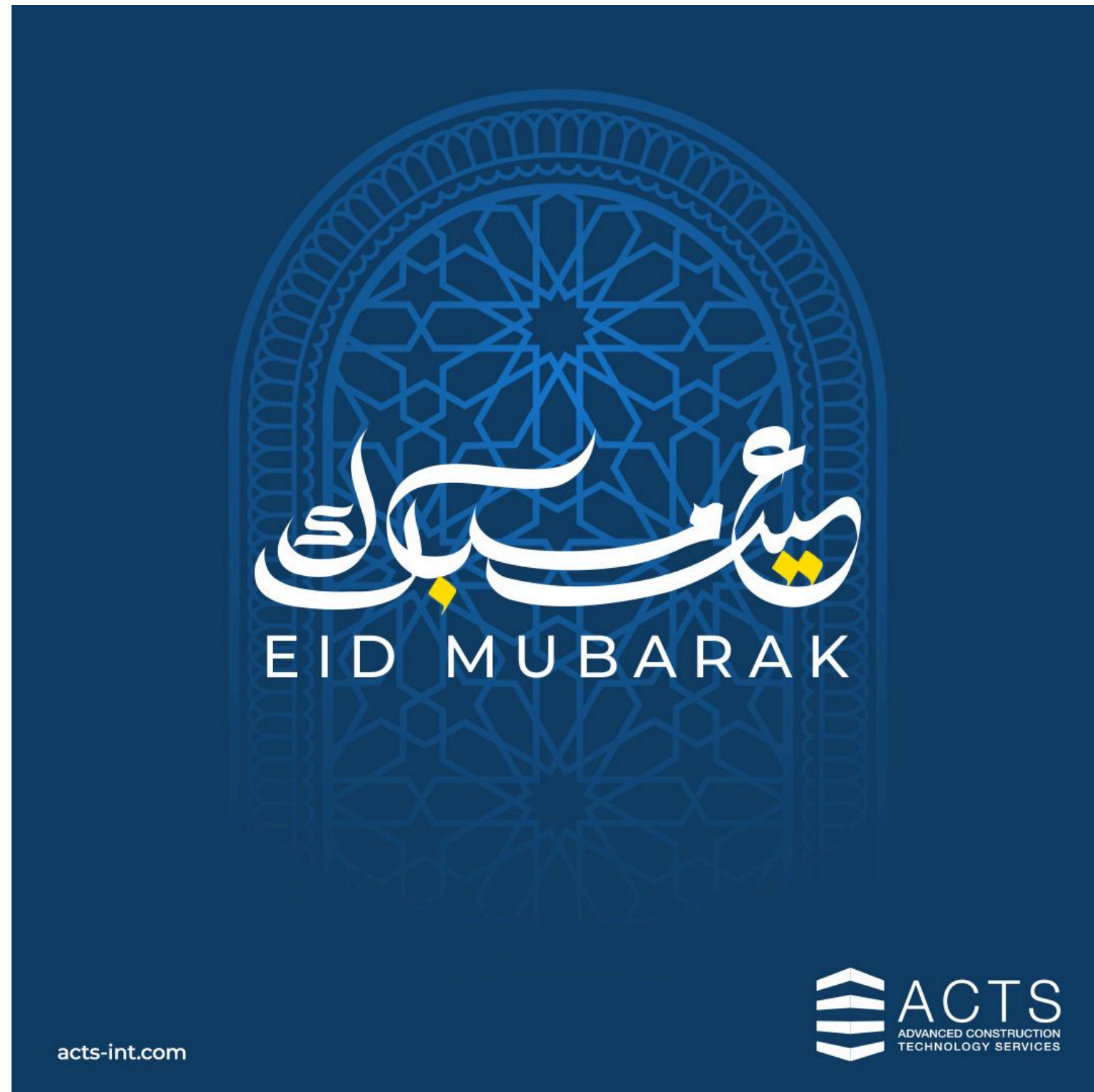
ABED AL RAHMAN ALI



CREATIVE PORTFOLIO

ACTS GRAPHIC DESIGN

ABED AL RAHMAN ALI



عید مبارک
EID MUBARAK

acts-int.com

ACTS
ADVANCED CONSTRUCTION
TECHNOLOGY SERVICES



DID YOU KNOW?

The Channel Tunnel, also known as the Eurotunnel, is the longest undersea tunnel in the world.

acts-int.com

ACTS
ADVANCED CONSTRUCTION
TECHNOLOGY SERVICES



November Courses

November 12 - Beirut, Lebanon - ACI Grade I - Concrete Field Testing	November 13 - Kigali, Rwanda - ACI Grade I - Concrete Field Testing
November 26 - Dubai, UAE - ACI 318-19 Seminar	November 27 - Dubai, UAE - ACI Concrete Construc- tion Special Inspector

For Registration
www.acts-int.com/calendar

ACTS
ADVANCED CONSTRUCTION
TECHNOLOGY SERVICES
Build on our credentials.

aci
American Concrete Institute
Always advancing



ACTS QUIZ

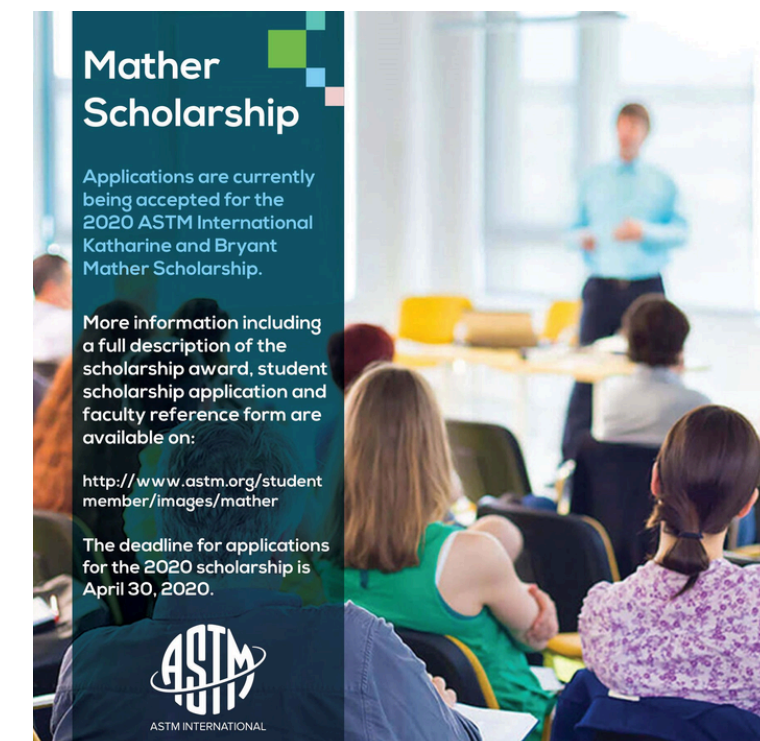
A pre-stressed concrete pile is

- A. Easy to handle
- B. Lighter in weight
- C. Extremely durable
- D. Suitable for heavy load
- E. All the above

?

acts-int.com

ACTS
ADVANCED CONSTRUCTION
TECHNOLOGY SERVICES
Build on our credentials.



Mather Scholarship

Applications are currently being accepted for the 2020 ASTM International Katharine and Bryant Mather Scholarship.

More information including a full description of the scholarship award, student scholarship application and faculty reference form are available on:

<http://www.astm.org/student-member/images/mather>

The deadline for applications for the 2020 scholarship is April 30, 2020.

ASTM
ASTM INTERNATIONAL

CREATIVE PORTFOLIO

AFANDINA GRAPHIC DESIGN

ABED AL RAHMAN ALI



CREATIVE PORTFOLIO

SHAWARMANJI
GRAPHIC DESIGN

ABED AL RAHMAN ALI





Thank You